

# YK700~1000XP

Dust-proof & drip proof Type

Arm length 700•800•1000mm/Maximum payload 20kg

## Robot ordering method

|   |   |   |                                     |    |                            |               |         |
|---|---|---|-------------------------------------|----|----------------------------|---------------|---------|
| <b>YK700XP - 200 - 3L -</b><br><b>800</b><br><b>1000</b><br>Model | Z axis stroke<br>- 200:200mm<br>- 400:400mm | Cable length<br>- 3L:3.5m<br>- 5L:5m<br>- 10L:10m | <b>RCX142 - E - R - N1 - CC - S</b> |    |                            |               |         |
|   |   |   | Controller                          | CE | Regenerative control/REGU2 | Expansion I/O | Network |

Blank:Standard  
E:CE specification

Controller type: Refer to the Controller page for further details.

\* Built-to-order product. Contact us for the delivery period.

## Basic specifications

| Model                                  |                | YK700XP   | YK800XP      | YK1000XP |
|--|----------------|---|--------------|----------|
| Axis specifications                    | X axis         | Arm length  | 350mm        | 450mm    |
|  |                | Rotation range                                    | ± 120°       |          |
|  | Y axis         | Arm length  | 350mm        | 450mm    |
|  |                | Rotation range                                    | ± 145°       |          |
|  | Z axis         | Stroke  | 200mm, 400mm |          |
| R axis                                 | Rotation range | ± 180°  |              |          |
| Motor                                  | X axis         | 800W  |              |          |
|  | Y axis         | 400W  |              |          |
|  | Z axis         | 400W  |              |          |
|  | R axis         | 200W  |              |          |
| Maximum speed                          | X, Y combined  | 6.7m / s  | 7.3m / s     | 8.0m / s |
|  | Z axis         | 1.7m / s  |              |          |
|  | R axis         | 600° / s  |              |          |
| Repeatability*1                        | X, Y axis      | ± 0.02mm  |              |          |
|  | Z axis         | ± 0.01mm  |              |          |
|  | R axis         | ± 0.005°  |              |          |
| Max. payload                           |                | 20kg  |              |          |
| Standard cycle time (with 2kg payload) |                | 0.57 sec.   | 0.60 sec.    |          |
| R axis allowable moment inertia*2      |                | 0.314kgm <sup>2</sup> (3.2kgfcm <sup>2</sup> )    |              |          |
| User wiring                            |                | 0.2sq × 20 wires                                  |              |          |
| User tubing                            |                | ø6 × 3  |              |          |
| Movement limit setting                 |                | 1. Soft limit, 2. Mechanical limit (X, Y, Z axes) |              |          |
| Robot cable                            |                | Standard 3.5m Option: 5m, 10m                     |              |          |
| Controller, power supply capacity      |                | RCX142-R, 2000VA                                  |              |          |
| Weight                                 |                | 56kg  | 57kg         | 58kg     |

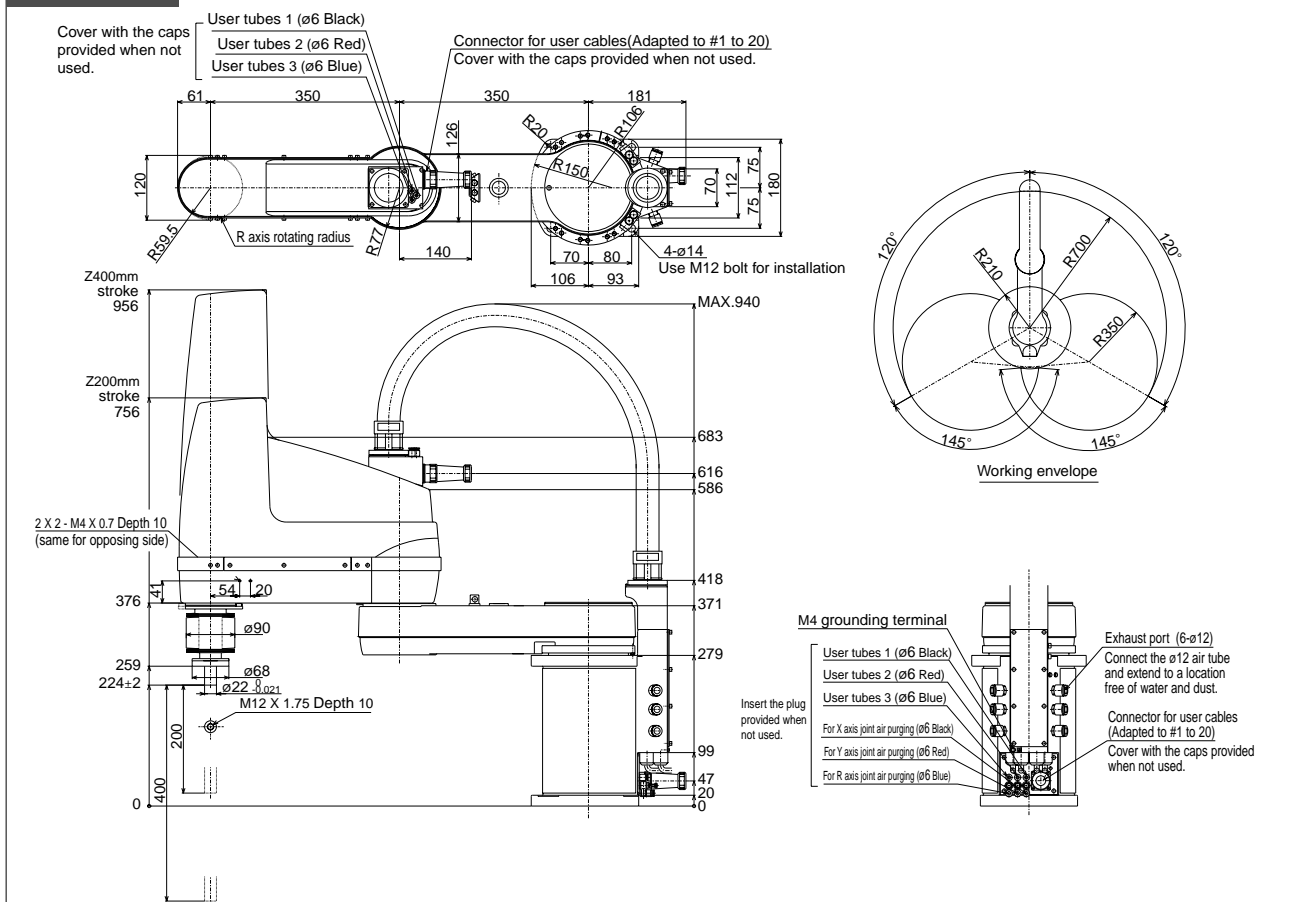
\*1: This is the value at a constant ambient temperature. (X, Y axes)

\*2: There are limits to the setting of the acceleration coefficient.

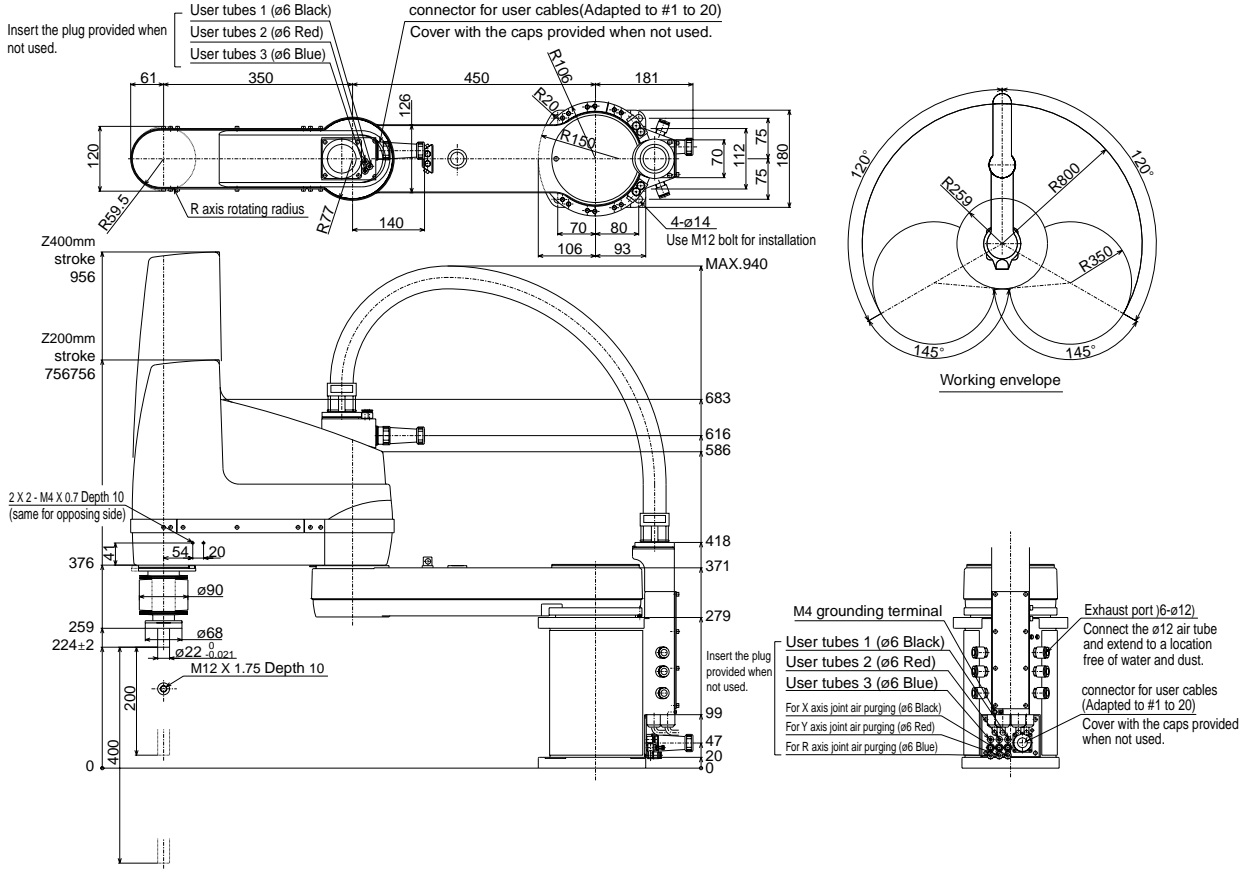


**YK700XP**

## YK700XP



# YK800XP



# YK1000XP

