

# YK500·600XC

Clean Type

Arm length 500·600mm/Maximum payload 10kg

## Robot ordering method

<b>YK500XC - 200 - 3L - 600</b> Model	Z axis stroke — 200:200mm — 300:300mm	Cable length — 3L:3.5m — 5L:5m — 10L:10m	<b>RCX142 - E - R - N1 - CC - S</b> Controller	CE — Blank:Standard — E:CE specification	Regenerative control:RGU2	Expansion I/O	Network	Battery
--	---	---	---	--	---------------------------	---------------	---------	---------

Controller type: Refer to the Controller page for further details.

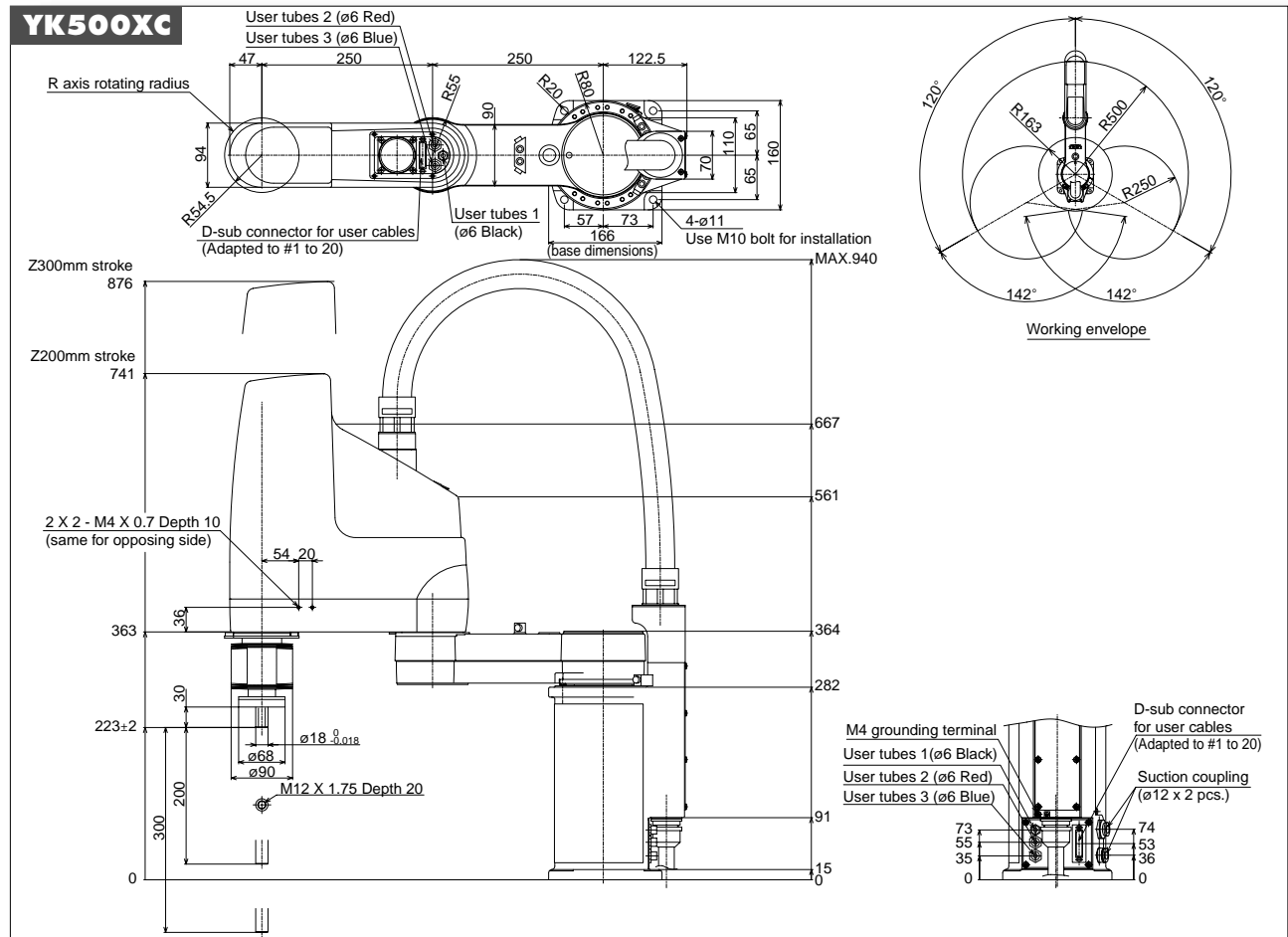
## Basic specifications

Model		YK500XC	YK600XC	
Axis specifications	X axis	Arm length	250mm	
		Rotation range	± 120°	
	Y axis	Arm length	250mm	
		Rotation range	± 142°	
Z axis	Stroke	200mm, 300mm		
Motor	R axis	Rotation range	± 180°	
		X axis	400W	
		Y axis	200W	
		Z axis	200W	
Maximum speed	X, Y combined	4.9m / s	5.6m / s	
		Z axis	1.7m / s	
		R axis	876° / s	
		X, Y axis	± 0.02mm	
Repeatability <sup>*1</sup>	Z axis	± 0.01mm		
		R axis	± 0.005°	
		Max. payload		10kg
		Standard cycle time (with 2kg payload)		0.53 sec.
R axis allowable moment inertia <sup>*2</sup>		0.118kgm <sup>2</sup> (1.2kgfcm <sup>2</sup> )		
User wiring		0.2sq × 20 wires		
User tubing		ø6 × 3		
Movement limit setting		1. Soft limit, 2. Mechanical stopper (X, Y, Z axes)		
Robot cable		Standard 3.5m Option: 5m, 10m		
Controller, power supply capacity		RCX142-R, 1500VA		
Weight		31kg	33kg	
Cleanliness (0.1µm base)		Class10		
Suction volume (NI/min)		60		

\*1: This is the value at a constant ambient temperature. (X, Y axes)  
\*2: There are limits to the setting of the acceleration coefficient.



**YK500XC**



# YK600XC

