

# YK700~1000XC

Clean Type

Arm length 700•800•1000mm/Maximum payload 20kg

## Robot ordering method

**YK700XC - 200 - 3L - RCX142 - E - R - N1 - CC - S**

**Model**      **Z axis stroke**      **Cable length**      **Controller**      **CE**      **Regenerative control:RGU2**      **Expansion I/O**      **Network**      **Battery**

Model: YK700XC, YK800XC, YK1000XC  
 Z axis stroke: 200:200mm, 400:400mm  
 Cable length: 3L:3.5m, 5L:5m, 10L:10m  
 Controller: RCX142  
 CE: Blank-Standard, E-CE specification  
 Regenerative control: RGU2  
 Expansion I/O, Network, Battery

Controller type: Refer to the Controller page for further details.

## Basic specifications

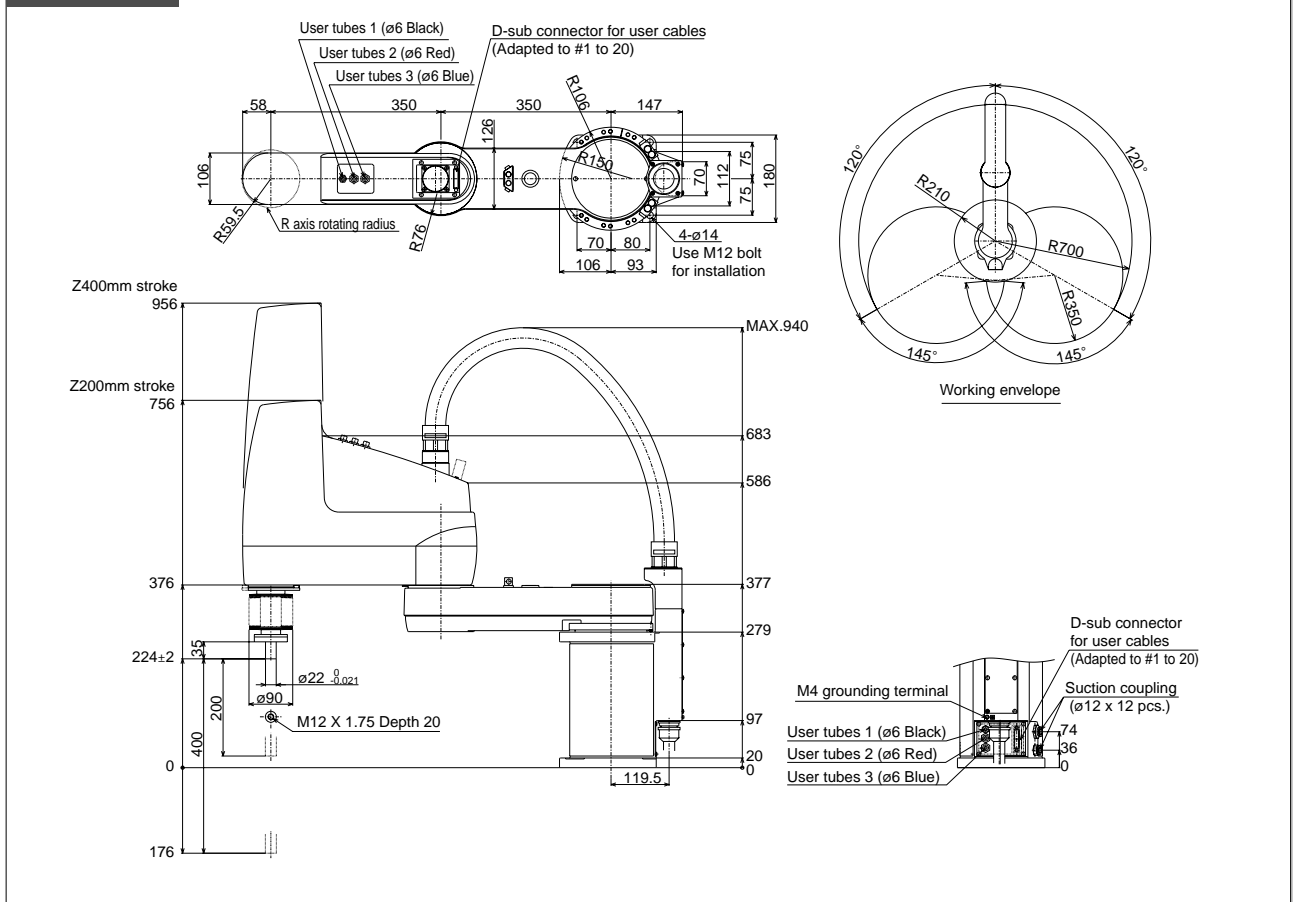
Model		YK700XC	YK800XC	YK1000XC	
Axis specifications	X axis	Arm length	350mm	450mm	550mm
		Rotation range	± 120°		
	Y axis	Arm length	350mm		450mm
		Rotation range	± 145°		
	Z axis	Stroke	200mm, 400mm		
R axis	Rotation range	± 180°			
Motor	X axis	800W			
	Y axis	400W			
	Z axis	400W			
	R axis	200W			
Maximum speed	X, Y combined	6.7m / s	7.3m / s	8.0m / s	
	Z axis	1.7m / s			
	R axis	600° / s			
	Repeatability*1	± 0.02mm			
Repeatability*1	Z axis	± 0.01mm			
	R axis	± 0.005°			
	Max. payload	20kg			
	Standard cycle time (with 2kg payload)	0.57 sec.		0.60 sec.	
R axis allowable moment inertia*2	0.314kgm <sup>2</sup> (3.2kgfcm <sup>2</sup> )				
User wiring	0.2sq × 20 wires				
User tubing	ø6 × 3				
Movement limit setting	1. Soft limit, 2. Mechanical stopper (X, Y, Z axes)				
Robot cable	Standard 3.5m Option: 5m, 10m				
Controller, power supply capacity	RCX142-R, 2000VA				
Weight	57kg	58kg	59kg		
Cleanliness (0.1µm base)	Class10				
Suction volume (Nl/min)	60				



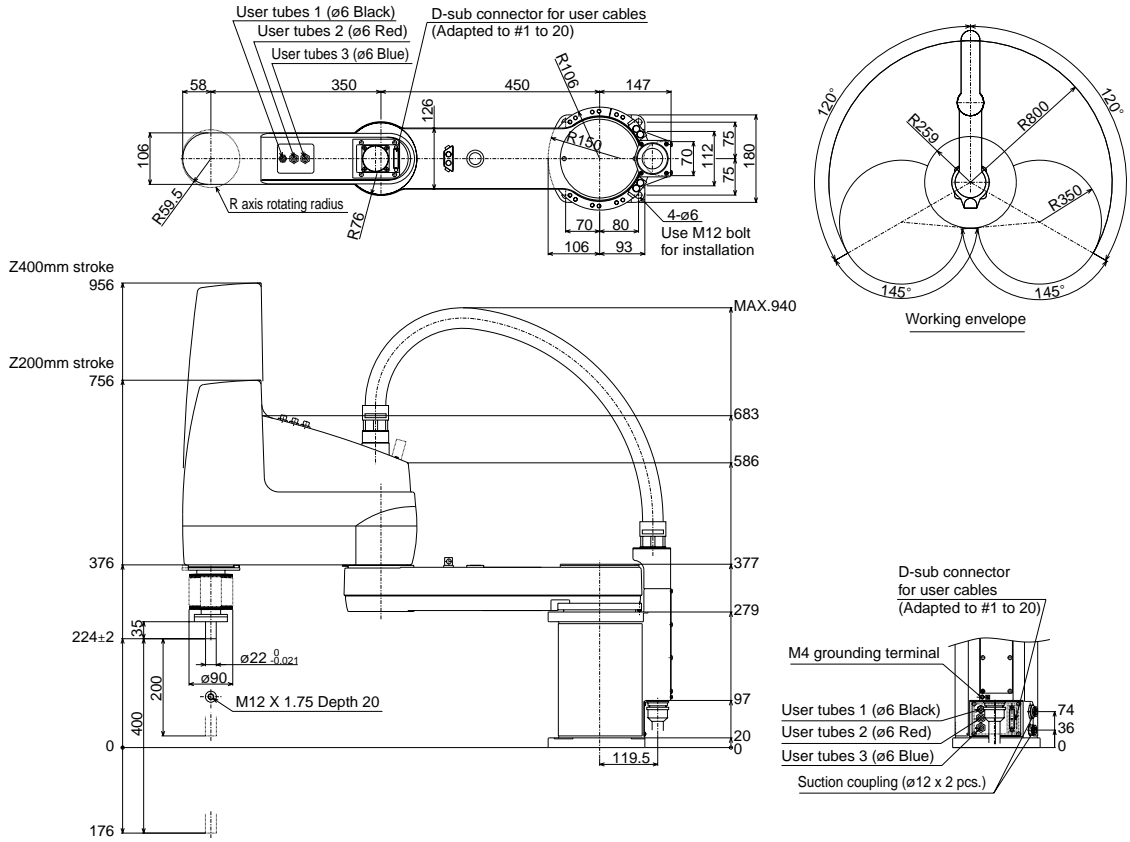
**YK700XC**

\*1: This is the value at a constant ambient temperature. (X, Y axes)  
 \*2: There are limits to the setting of the acceleration coefficient.

## YK700XC



# YK800XC



# YK1000XC

